



# INTRODUCTION

Each of our custom-made sandals and flip flops are carefully designed to the cast or scan of the patient's foot and manufactured with the corrections and accommodations in line with the practitioner's prescription.

# SANDAL RANGE



Two strap style with velcro fastening (available in a slider version and also with heel strap)



Two strap style slider (no heel strap) with bronze buckles

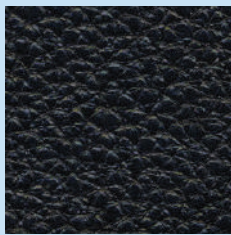


Thong strap style with velcro fastening



Two strap style with heel strap and bronze buckles

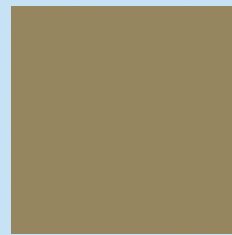
# SANDAL COLOUR OPTIONS (ALL STYLES)



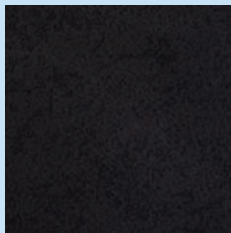
Black Grain



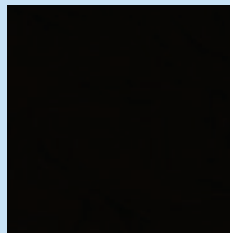
Brown Grain



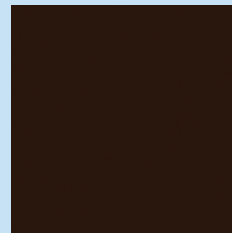
Taupe Nubuck



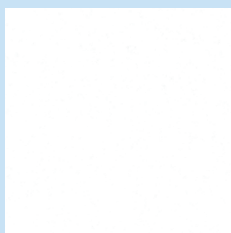
Black Nubuck



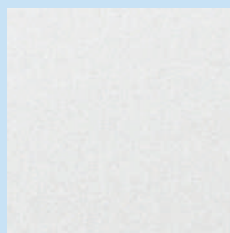
Black Leather



Brown Leather



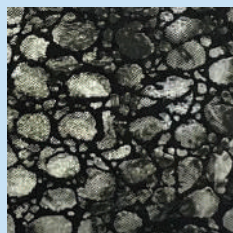
White Leather



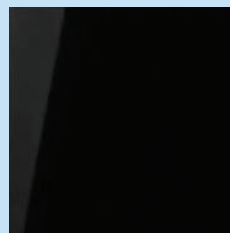
Alabaster Leather



Navy Leather



Graphite Glitter



Black Patent

THONG STRAP STYLE ONLY



Black Rhino



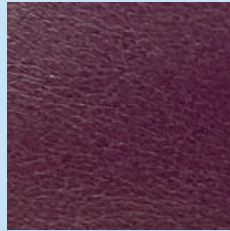
Leopard Print



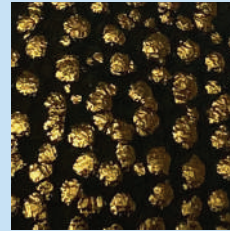
Snake Skin



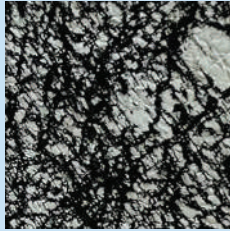
Tangerine Leather



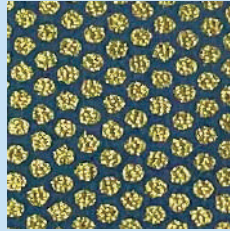
Mulberry Leather



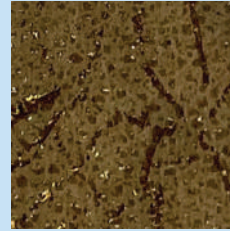
Copper Stone



Mono Jazz



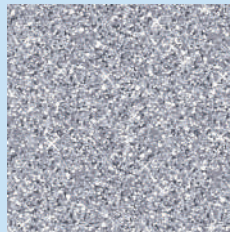
Azure Shimmer



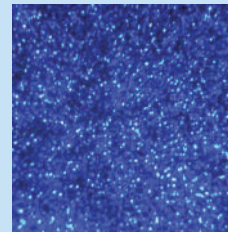
Desert Earth



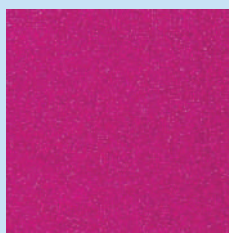
Turquoise Glitter



Silver Glitter



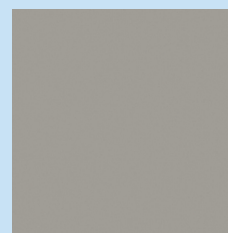
Blue Glitter



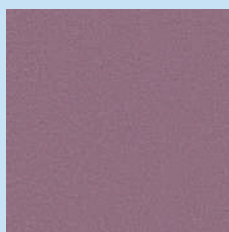
Fuchsia Glitter



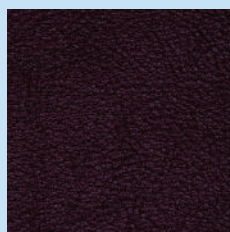
Apricot Glitter



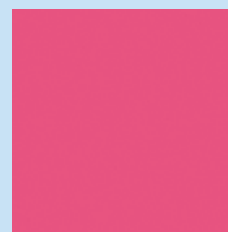
Dove Leather



Lilac Leather



Burgundy Pearl Leather



Fuchsia Leather

2 & 3 STRAP STYLE ONLY